



# Cystatin A Polyclonal Antibody

<b>Catalog No</b>	YP-Ab-03803
<b>Isotype</b>	IgG
<b>Reactivity</b>	Human;Rat;Mouse;
<b>Applications</b>	WB;IHC;IF;ELISA
<b>Gene Name</b>	CSTA
<b>Protein Name</b>	Cystatin-A
<b>Immunogen</b>	The antiserum was produced against synthesized peptide derived from human Stefin A. AA range:49-98
<b>Specificity</b>	Cystatin A Polyclonal Antibody detects endogenous levels of Cystatin A protein.
<b>Formulation</b>	Liquid in PBS containing 50% glycerol, 0.5% BSA and 0.02% sodium azide.
<b>Source</b>	Polyclonal, Rabbit,IgG
<b>Purification</b>	The antibody was affinity-purified from rabbit antiserum by affinity-chromatography using epitope-specific immunogen.
<b>Dilution</b>	Western Blot: 1/500 - 1/2000. Immunohistochemistry: 1/100 - 1/300. Immunofluorescence: 1/200 - 1/1000. ELISA: 1/5000. Not yet tested in other applications.
<b>Concentration</b>	1 mg/ml
<b>Purity</b>	≥90%
<b>Storage Stability</b>	-20°C/1 year
<b>Synonyms</b>	CSTA; STF1; STFA; Cystatin-A; Cystatin-AS; Stefin-A
<b>Observed Band</b>	11kD
<b>Cell Pathway</b>	Cytoplasm .
<b>Tissue Specificity</b>	Expressed in the skin throughout the epidermis.
<b>Function</b>	function:This is an intracellular thiol proteinase inhibitor.,similarity:Belongs to the cystatin family.,
<b>Background</b>	The cystatin superfamily encompasses proteins that contain multiple cystatin-like sequences. Some of the members are active cysteine protease inhibitors, while others have lost or perhaps never acquired this inhibitory activity. There are three inhibitory families in the superfamily, including the type 1 cystatins (stefins), type 2 cystatins, and kininogens. This gene encodes a stefin that functions as a cysteine protease inhibitor, forming tight complexes with papain and the cathepsins B, H, and L. The protein is one of the precursor proteins of cornified cell envelope in keratinocytes and plays a role in epidermal development and maintenance. Stefins have been proposed as prognostic and diagnostic tools for cancer. [provided by RefSeq, Jul 2008],



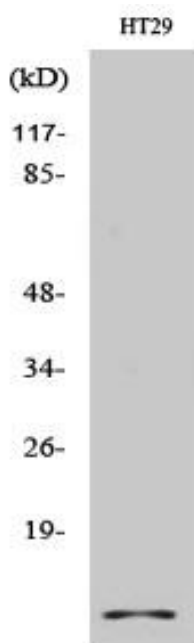
**matters needing attention**

Avoid repeated freezing and thawing!

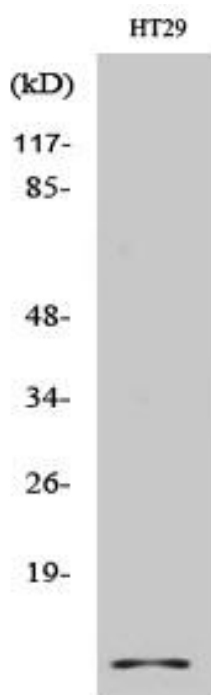
**Usage suggestions**

This product can be used in immunological reaction related experiments. For more information, please consult technical personnel.

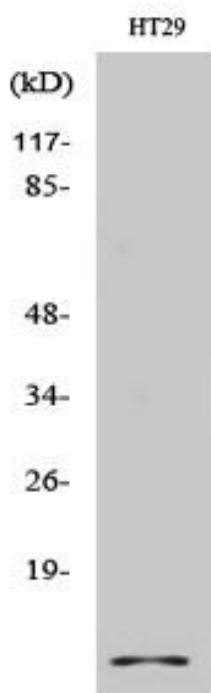
## Products Images



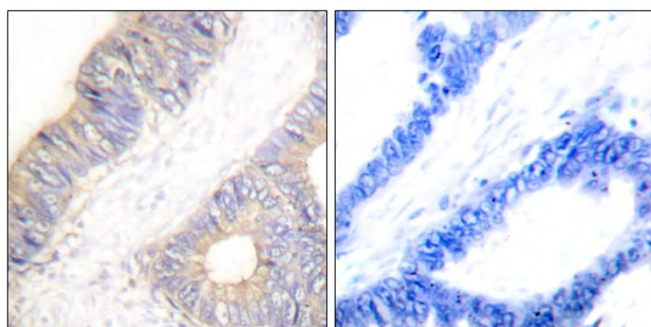
Western Blot analysis of various cells using Cystatin A Polyclonal Antibody



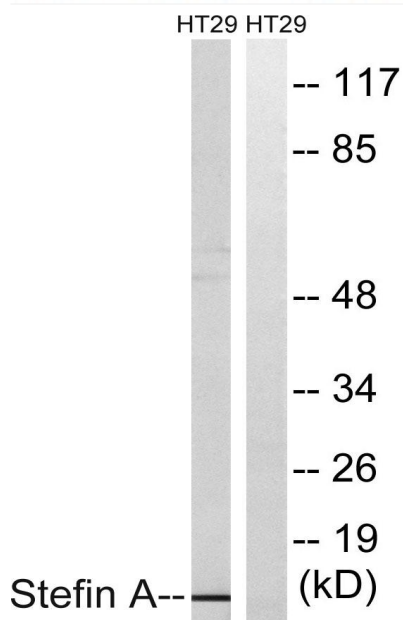
Western Blot analysis of HT29 cells using Cystatin A Polyclonal Antibody



Immunofluorescence analysis of A549 cells, using Stefin A Antibody. The picture on the right is blocked with the synthesized peptide.



Immunohistochemistry analysis of paraffin-embedded human colon carcinoma tissue, using Stefin A Antibody. The picture on the right is blocked with the synthesized peptide.



Western blot analysis of lysates from HT29 cells, using Stefin A Antibody. The lane on the right is blocked with the synthesized peptide.